

# Fungi

Yeast is an example of a single celled fungus.

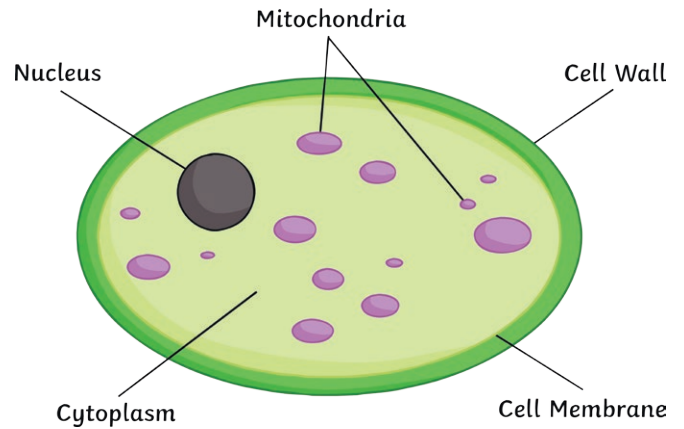
Toadstools, mushrooms and moulds are examples of multicellular fungi.

Fungi use saprotrophic nutrition, they secrete enzymes to digest food and then absorb it.

Hyphae can produce spores, enabling the fungus to be easily spread.

Fungi have thread like structures called hyphae.

The cell wall of fungi is made from chitin.



## Secondary

visit [twinkl.com](https://www.twinkl.com)



# Fungi

Yeast is an example of a single celled fungus.

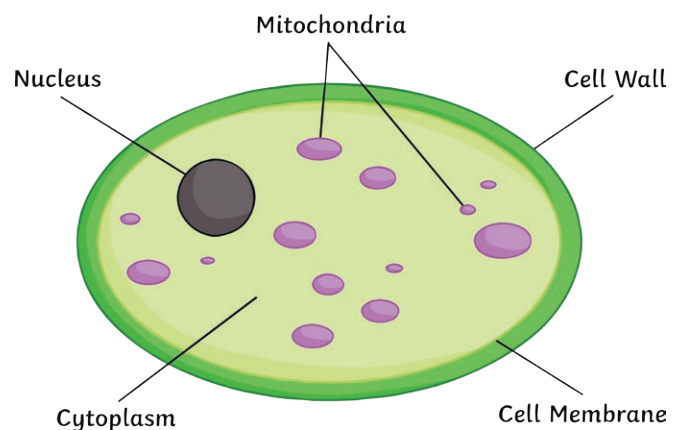
Toadstools, mushrooms and moulds are examples of multicellular fungi.

Fungi use saprotrophic nutrition, they secrete enzymes to digest food and then absorb it.

Hyphae can produce spores, enabling the fungus to be easily spread.

Fungi have thread like structures called hyphae.

The cell wall of fungi is made from chitin.



## Secondary

visit [twinkl.com](https://www.twinkl.com)

